



13 March 2025



MISSION AND VISION:



- CGSC Cultural & Area Studies Office (CASO) serves the educational mission within the institution and across the Army. CASO, in conjunction with partner organizations, provides a mechanism to engage all CGSC constituencies concerning the importance of cultural, political, economic and social factors in shaping the operational environment. CASO outreach extends across the Army with a variety of educational programs, including publishing, guest speakers, direct support to CGSC classes, live panels, video podcasts, international cooperation and research.
- CASO and its events create a sustainable advantage for Regionally Aligned Forces, Security Forces Assistance Brigades, Army schools and Centers of Excellence by providing training and education tools that enhance Professional Military Education, Pre-Deployment and Functional Training in support of the U.S. National Security and National Defense Strategy objectives in a variety of regional contingencies across the spectrum of conflict including the possibility of Large-Scale Combat Operations. CASO's purpose is to assist in preparing globally responsive and regionally aligned forces that work with a variety of partners including host nation militaries and populations to execute the Army's Prevent, Shape and Win strategic role.



WHAT IS CHINA'S MILITARY STRATEGY- IS IT FOR GLOBAL POWER PROJECTION?

OPENING REMARKS:

COL JASON H. ROSENSTRAUCH-

Deputy Commandant, U.S. Army CGSC.

PANEL MEMBERS:

AMBASSADOR DAVID SHINN-

former Director, the Office of East, Horn of Africa, and African Indian Ocean Island Affairs, U.S. Department of State, Washington, DC.

DR. BARRY M. STENTIFORD-

COL (Ret), Professor of History, U.S. Army School of Advanced Military Studies, Fort Leavenworth, KS.

LT. COL. SAMUEL SHORT-

Australian Army, Department of Joint, Interagency, and Multinational Operations, U.S. Army CGSC, Fort Leavenworth, KS.

MODERATOR:

DR. MAHIR J. IBRAHIMOV (DR. I.)-

Director, Cultural and Area Studies Office, CGSC.

DATE:

Thur, 13 MAR, 2025

TIME:

1300 - 1500 (CST)

LOCATION:

Arnold Conf. Room,
Lewis and Clark Center,
Fort Leavenworth, KS

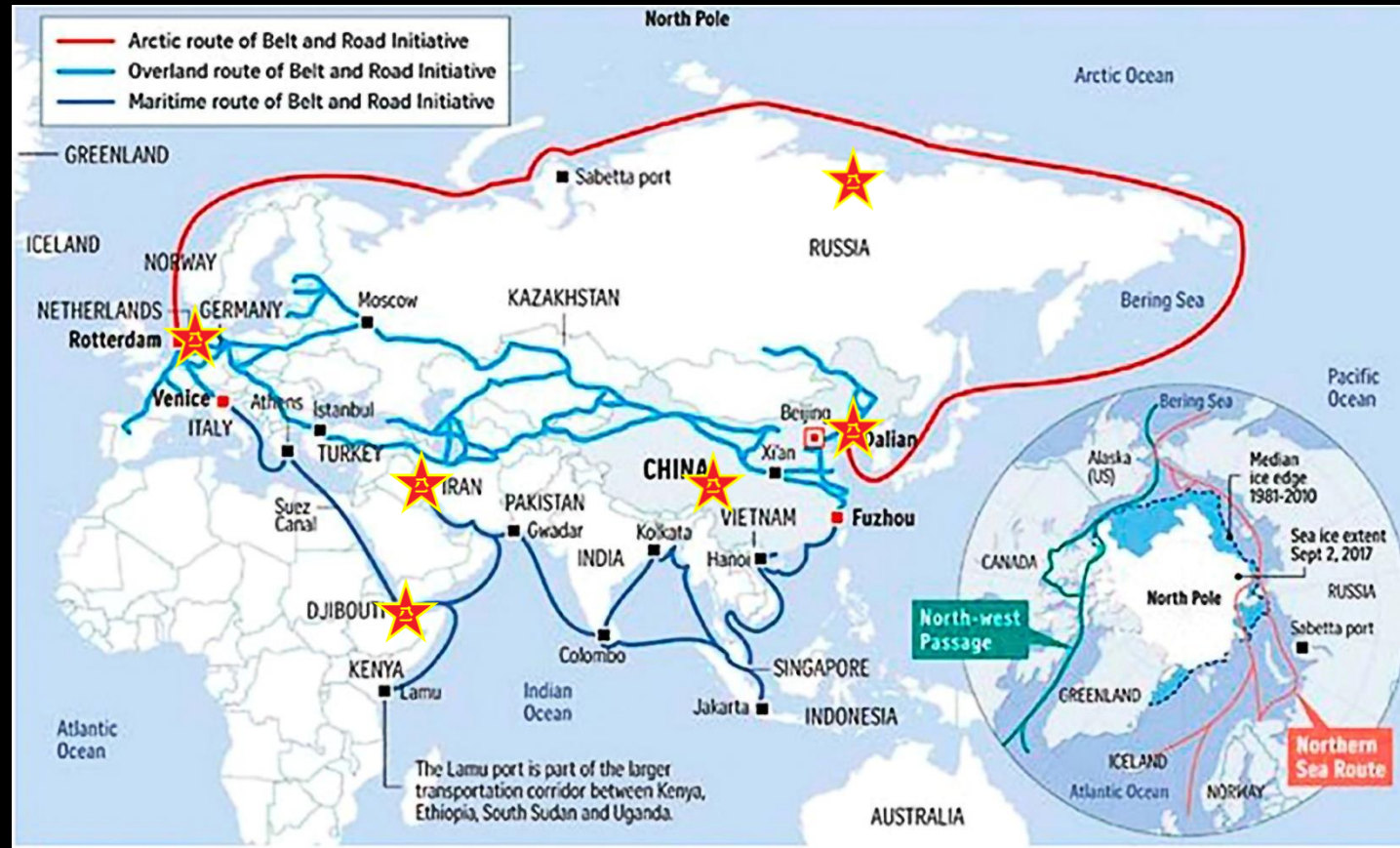
All welcome for the audience.

For outstations, the event will be available live on

CGSC's Facebook page at:

<https://www.facebook.com/USACGSC>

‘CHINA’S DREAM’ - THE GRAND STRATEGY OF TRANSFORMING INTO A GLOBAL POWER



“The ‘China’s dream’ - The Grand Strategy of Transforming China Into a Global Maritime Power,” by Alba Iulia Popescua , National Defense University, Bucharest, Romania. Published online: 28 Oct 2024. Accessed at: <https://www.tandfonline.com/doi/full/10.1080/23311886.2024.2414873#abstract> on 6 March 2025

“ Military and Security Developments Involving The People’s Republic of China,” 2024 U.S. Department of Defense Annual Report to Congress. Accessed at <https://media.defense.gov/2024/Dec/18/2003615520/-1/-1/0/MILITARY-AND-SECURITY-DEVELOPMENTS-INVOLVING-THE-PEOPLES-REPUBLIC-OF-CHINA-2024.PDF> on 10 March 2025



CHINA'S MILITARY ENGAGEMENT IN AFRICA



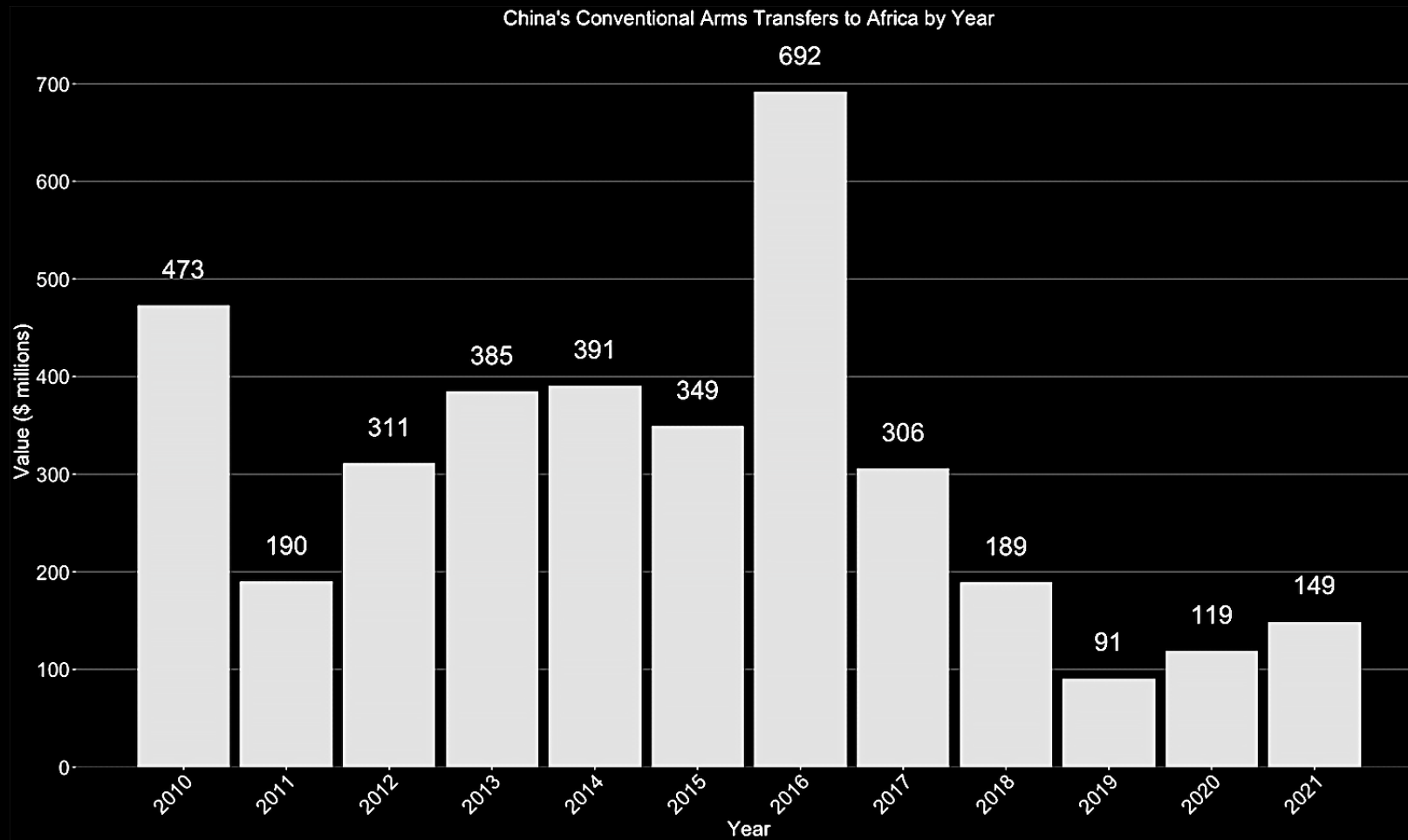
Ambassador David H. Shinn

Former director

**The Office of East, Horn of Africa, and African Indian
Ocean Island Affairs, U.S. Department of State,
Washington, D.C.**

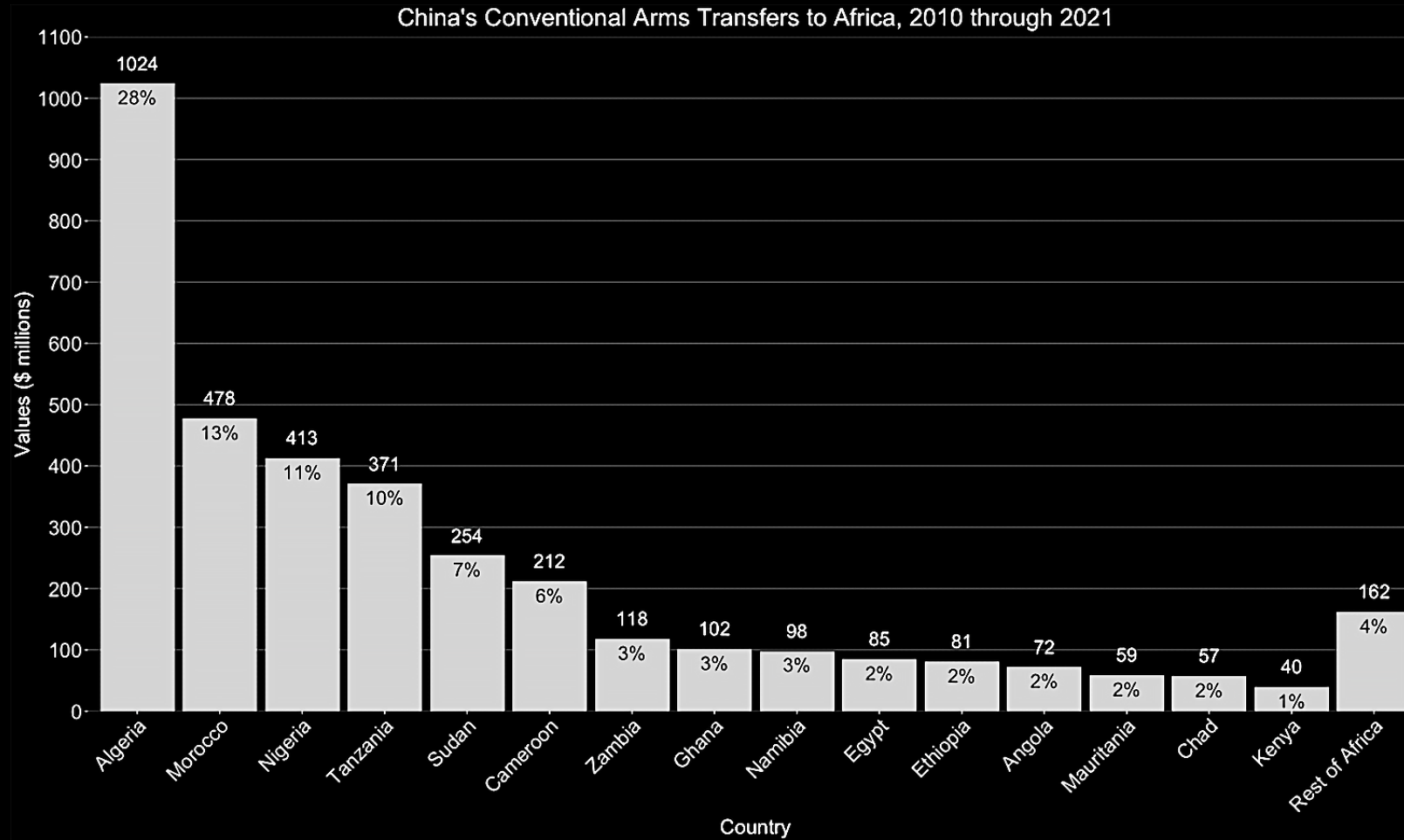
Presentation for the
Cultural and Area Studies Office
U.S. Army Command and General Staff College

CHINA'S CONVENTIONAL ARMS TRANSFERS TO AFRICA (2010-2021)



SOURCE: Data from the SIPRI Arms Transfers Database

CHINA'S ARMS TRANSFERS BY COUNTRY (2010-2021)



SOURCE: Data from the SIPRI Arms Transfers Database



CHINA'S CONTRIBUTION TO UN PKO IN AFRICA AS OF AUGUST 2024



- Western Sahara - 6 experts
- Democratic Republic of Congo - 8 staff
- South Sudan - 1031 troops/police/staff/experts
- Abyei Sudan/South Sudan - 270 troops/staff/experts
- Central African Republic - 5 police
- Total - 1320 troops/police/staff/experts



PLAN PORT CALLS IN AFRICA 2000 - 2025



- **Djibouti** (until January 2020 only) **108**
- **South Africa** **16**
- **Tanzania** **9**
- **Seychelles** **7**
- **Egypt** **5**
- **Mozambique** **5**
- **Nigeria** **4**
- **Gabon** **4**



PLAN PORT CALLS IN AFRICA 2000 – 2025 (CONT'D)



- 3 PLAN port calls in Kenya, Angola, Cameroon, Congo Republic, Madagascar, and Morocco
- 2 PLAN port calls in Algeria, Tunisia, Cote d'Ivoire, and Ghana
- 1 PLAN port call in Mauritius, Namibia, Senegal, Sierra Leone, Sudan, and Mauritania
- These port calls include those made by PLAN warships, the hospital ship *Peace Ark*, and research/spy ships.



WHAT IS CHINA'S MILITARY STRATEGY – IS IT FOR GLOBAL POWER PROJECTION? (THAILAND)

Dr. Barry M. Stentiford

COL (Ret.) Professor of History

U.S. Army School of Advanced Military Studies

Fort Leavenworth, KS.

Presentation for the
Cultural and Area Studies Office
U.S. Army Command and General Staff College

SOUTHEAST ASIA TODAY



CHULALONGKORN AND PHIBUN



CHINESE VT4 MBT





PRC STRATEGY AND THE NATIONAL GOALS OF THE “CHINA DREAM”



Lt. Col. Samuel Short

(Australian Army)

**Department of Joint, Interagency, and Multinational Operations
U.S. Army Command and General Staff College
Fort Leavenworth, KS.**

Presentation for the
Cultural and Area Studies Office
U.S. Army Command and General Staff College



PLA – “Above-the-neck” reforms

Figure 1. PLA Structure Prior to Reforms

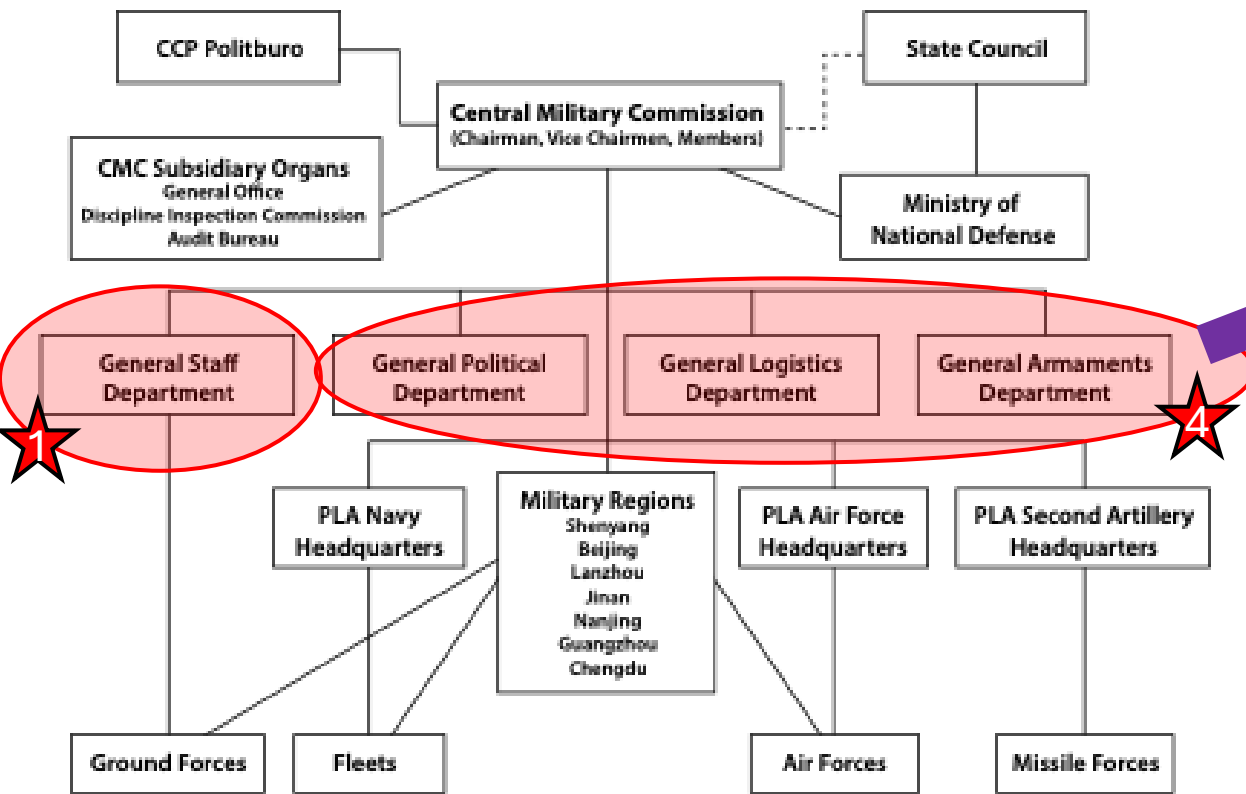
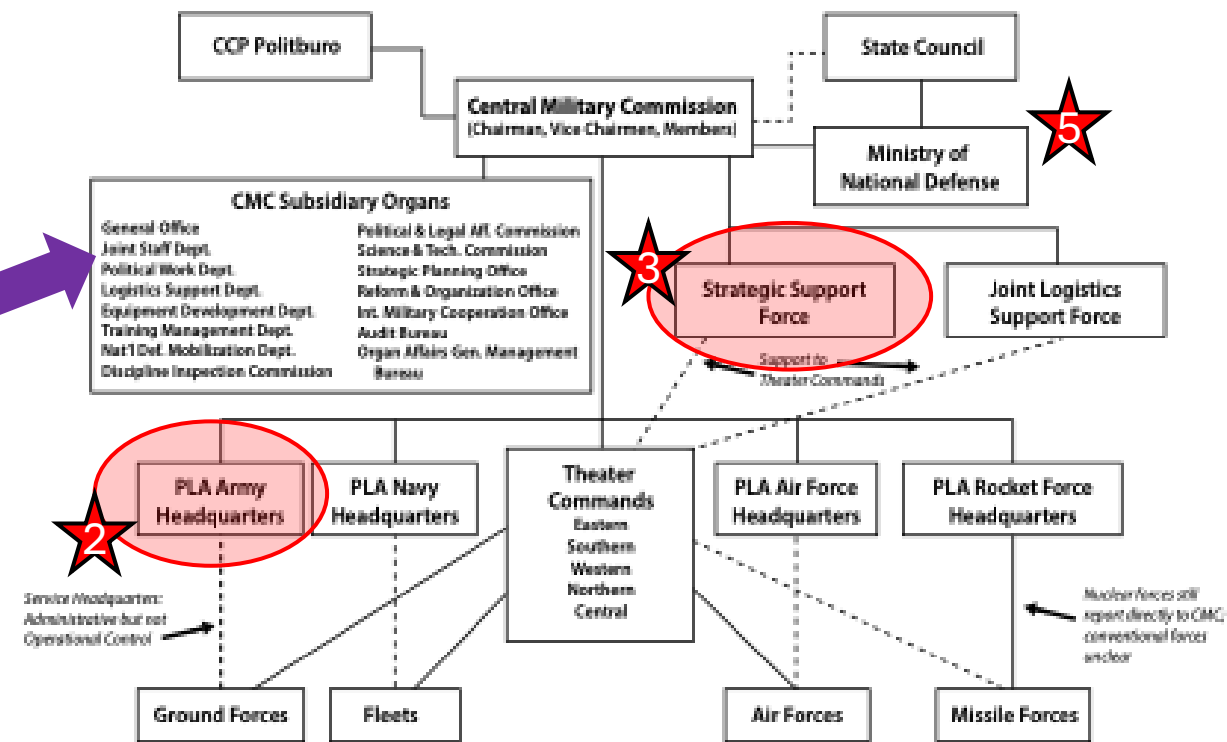


Figure 2. PLA Structure after Reforms



5 x Theatres
4 x Services
4 x Arms

Most Recent – 2024 Reforms

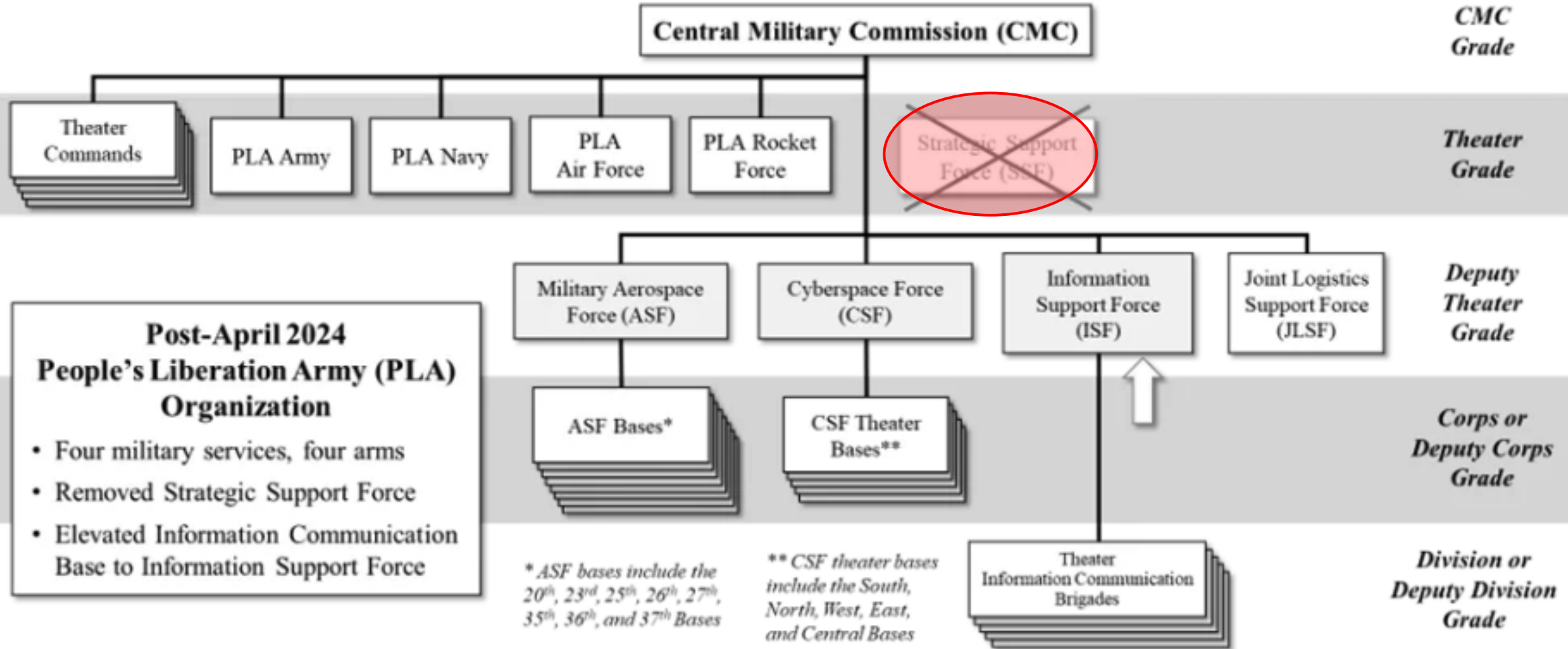
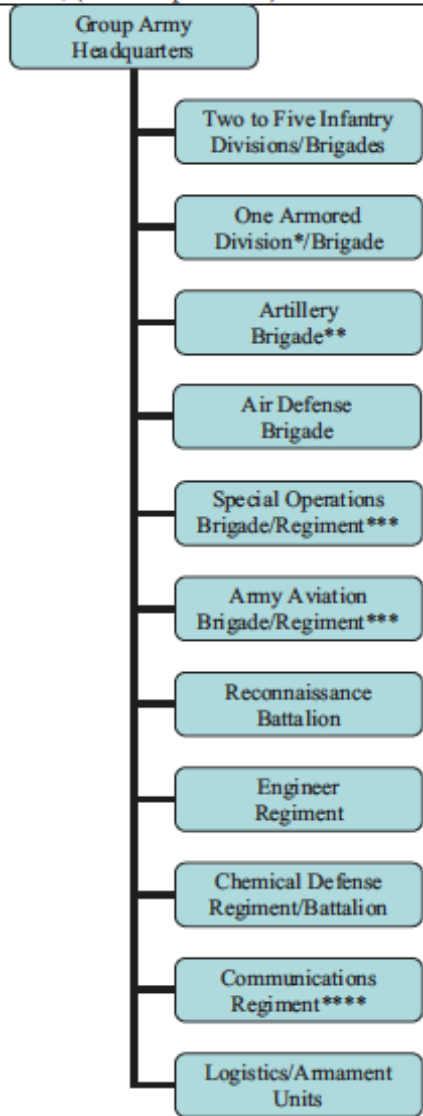
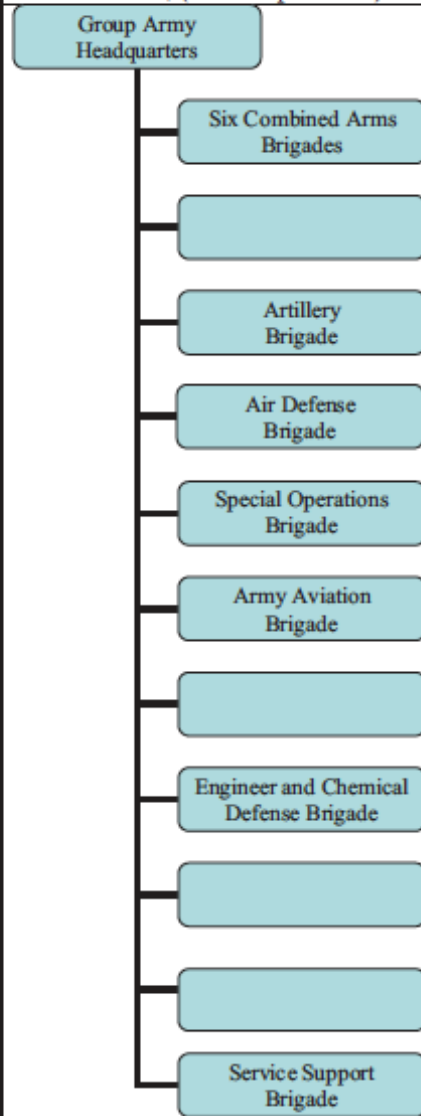


Figure 2: Post-April 2024 People's Liberation Army (PLA) Organization

Group Army Structure, Pre-Reform, April 2017, (18 Group Armies)



Group Army Structure, Post-Reform, May 2017 and after, (13 Group Armies)



* The 38th Group Army had an armored division.

** 1st/42nd GAs also had a Long-Range Rocket Brigade.

*** SOF/Army Aviation units in some group armies.

**** A few group armies were also assigned an electronic countermeasures brigade (ECM) or regiment.

PLA- “Below-the-neck” reform

- 18 x Group Armies reduced to 13.
 - 6x Combined Arms Bde in Each GA
 - Note Aviation, SOF BDE.
 - Old DIV structure removed
 - except in 4x - Xinjiang / 2x - Beijing
- Border Defence Units: Reformed-Bolstered
- Training Focus:
 - PLA-Army:
 - Amphib Capy – Focus SE Theatre COMD
 - PLA-Navy (Marine)
 - Force projection in PRC perceived region.
 - Force Projection - developing.
 - Limited NEO
- **Limitations:**
 - Air (Y-20 x50) (US comparison 223 C-17 + 55 C-5)
 - Maritime deployment capability for “Big Army”
 - Helo capacity within GA

Questions / Answers / Comments

Organization and Capabilities



Source Documents Provide The Following Guidance:

Career-Long Development	Life-Long Learning Skills: Self-Development/Advanced Education Cultural Education: From Awareness To Competence
Desired Leader Attributes	<ol style="list-style-type: none"> 1. Understanding Security Environment and Instruments of National Security 2. Anticipating and Responding to Surprise and Uncertainty 3. Anticipating and Recognizing Change and Leading Transitions 4. Operating Intent Through Trust, Empowerment, and Understanding 5. Making Ethical Decisions Based on the Profession of Arms 6. Thinking Critically/Strategically and Applying Joint Warfighting Principles at All Levels of Warfare
Foundations of Joint Operations	Comprehend how factors such as geopolitics, geostrategic, society, religion, region, and culture play in shaping planning and execution of joint force operations across the range of military operations, to include traditional and irregular warfare.

CJCSI 1805.01B (EPMEP) (Enlisted Professional Military Education Policy)
 CJCSI 1800.01G (OPMEP) (Officer Professional Military Education Policy)





Contact:

Dr. Mahir Ibrahimov (Dr. I.)

Director

Cultural & Area Studies Office (CASO)

U.S. Army Command and General Staff College (CGSC)

Fort Leavenworth, KS 66027-2300

Phone: (913) 684-3345

Email: mahir.j.ibrahimov.civ@army.mil